

# The Missouri Drought Plan

Approaching a drought

presented by  
Charlie DuCharme

at the

NOAA Midwest Drought Early Warning System Kickoff meeting  
in St. Louis, MO, Feb. 9, 2016



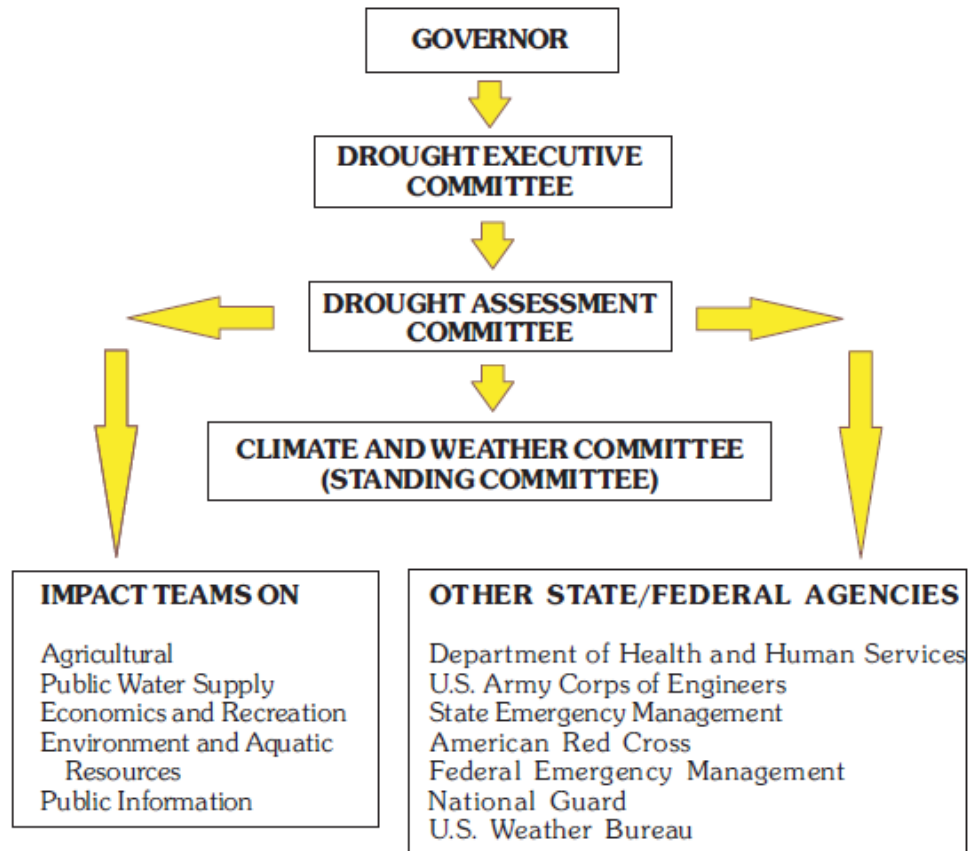


# CONTENTS

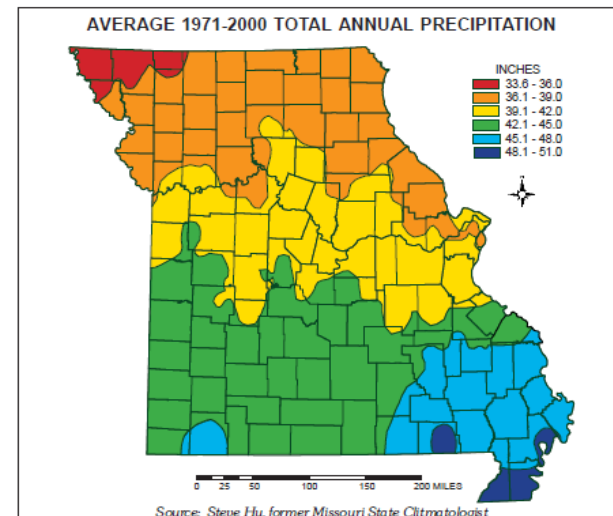
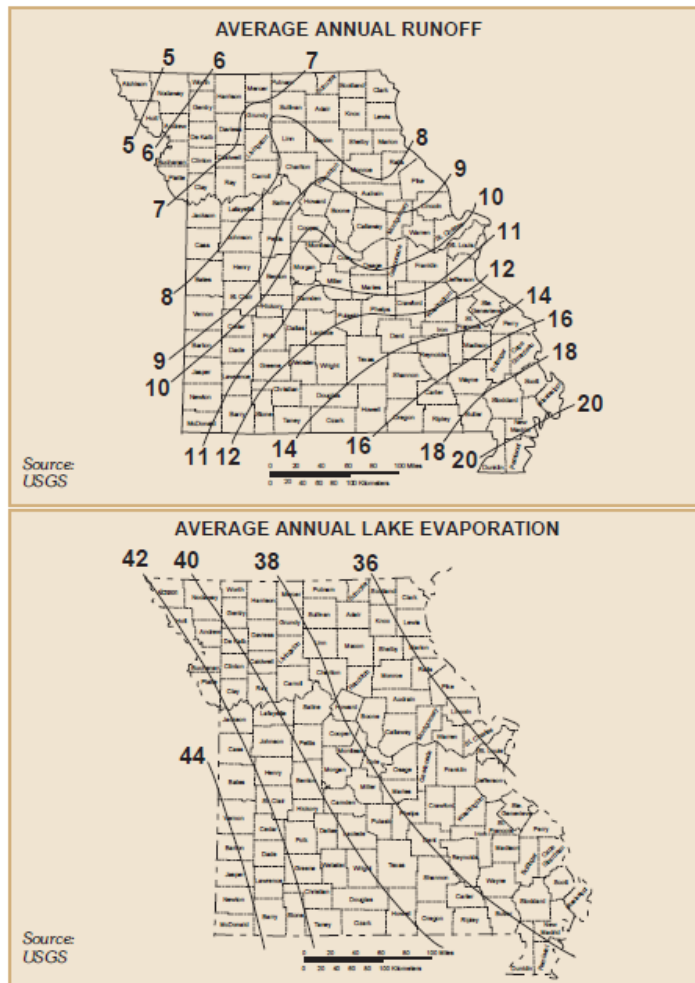
Preface .....	v
Foreword .....	vi
Introduction .....	1
Problem .....	2
Drought Planning .....	3
Defining Drought .....	4
Monitoring Drought .....	5
Categories of Drought .....	7
Overview of Missouri Drought Susceptibility .....	9
Southern Missouri .....	9
Northern and West-Central Missouri .....	12
Concept of Response Plan Operations .....	14
Phases of Drought Response System .....	14
Organization and Assignment of Responsibilities .....	20
Organizational Overview .....	20
Assignment of Responsibilities .....	21
Conclusions .....	26
Appendix 1: Missouri Drought Plan Organizational Chart .....	27
Appendix 2: State Drought Impact Teams .....	28
Appendix 3: Suggested Response Priority Water-Use Class .....	29
Appendix 4: A Local Water Shortage Response Plan .....	31
Appendix 5: Evaluating Vulnerability and Demand .....	36
Appendix 6: Post-Drought Evaluation Procedures .....	38
Appendix 7: Water Conservation .....	40
Appendix 8: The Local Water Shortage Management Team .....	44
Appendix 9: Pricing .....	45
Appendix 10: Assessment and Recommendations for Drought Plans .....	46
Appendix 11: Alternatives .....	49
Appendix 12: Maps .....	52
Appendix 13: Reservoir Firm Yield Water Supply Studies .....	67

## APPENDIX 1

### *Missouri Drought Plan Organizational Chart*



## Climate maps included in MO Drought Plan



## Drought Indices

- Palmer Drought Severity Index (PDSI)
- Crop Moisture Index (CMI)
- Standardized Precipitation Index (SPI)
- Streamflow percentiles
- Recent precipitation amounts and percent of normal, e.g. 7-day, 30-day, 90-day

## Phases of Drought Response

### **Phase 1 - Advisory Phase**

A Climate and Weather Committee, referred to as a standing committee of several state and federal government agencies in Missouri who usually would be at least keeping an eye on meteorologic and climatic conditions. As conditions get dryer and appear they will get worse the Climate and Weather Committee would recommend declaring a Drought Alert and activating the Drought Assessment Committee.

### **Phase 2 – Drought Alert**

PDSI is at least -1.0 and streamflow, reservoir levels and groundwater levels are below normal over a several month period. A Drought Alert might be declared by the Governor. Drought Assessment Committee is activated.

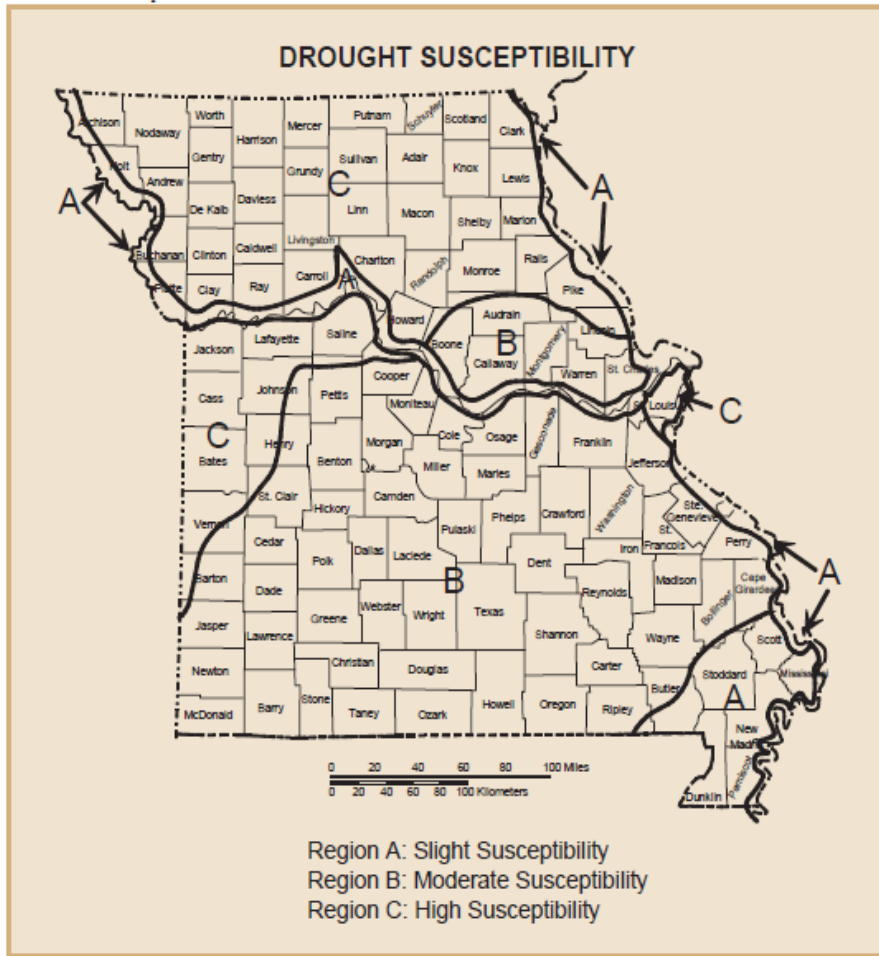
### **Phase 3 – Conservation Phase**

PDSI is -2.0 to -4.0 and streamflow, reservoir levels and groundwater levels continue to decline;

### **Phase 4 – Drought Emergency (water rationing)**

PDSI is less than -4.0 . A Drought Emergency might be declared by the Governor.

# Drought Susceptibility Designations



## **Region A: Slight Susceptibility**

Floodplains of the Missouri & Mississippi Rivers consisting of saturated sand and gravels (alluvial deposits).

## **Region B: Moderate Susceptibility**

Groundwater resources are adequate to meet domestic and municipal water needs.

## **Region C: High Susceptibility**

Groundwater resources are generally too mineralized and limited in production.

The Missouri Drought Plan, 2002 is available on the internet at <http://dnr.mo.gov/pubs/WR69.pdf>

It can also be accessed through the NIDIS web site.