

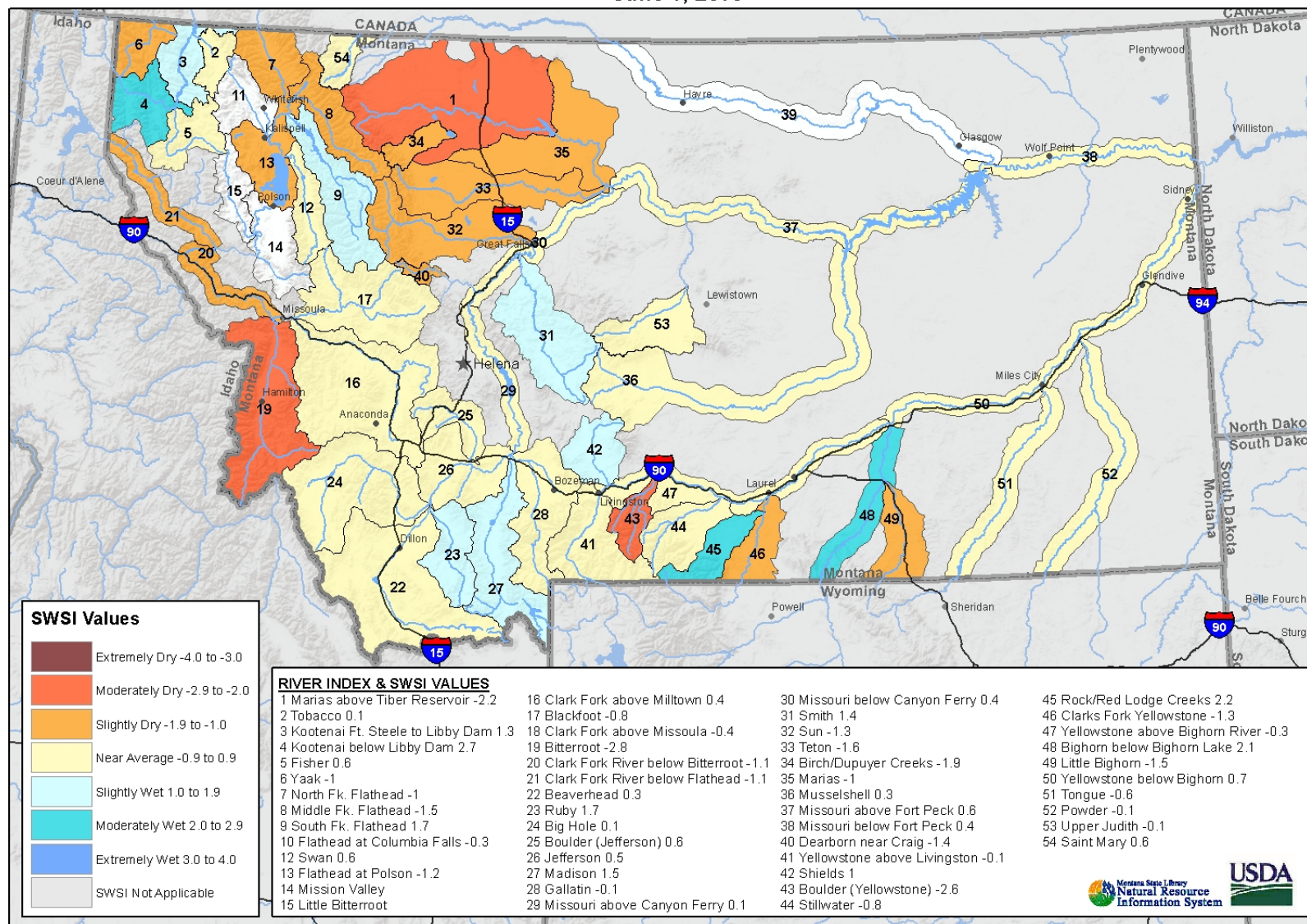
OBSERVED IMPACTS: MONTANA

JUNE – JULY 2016

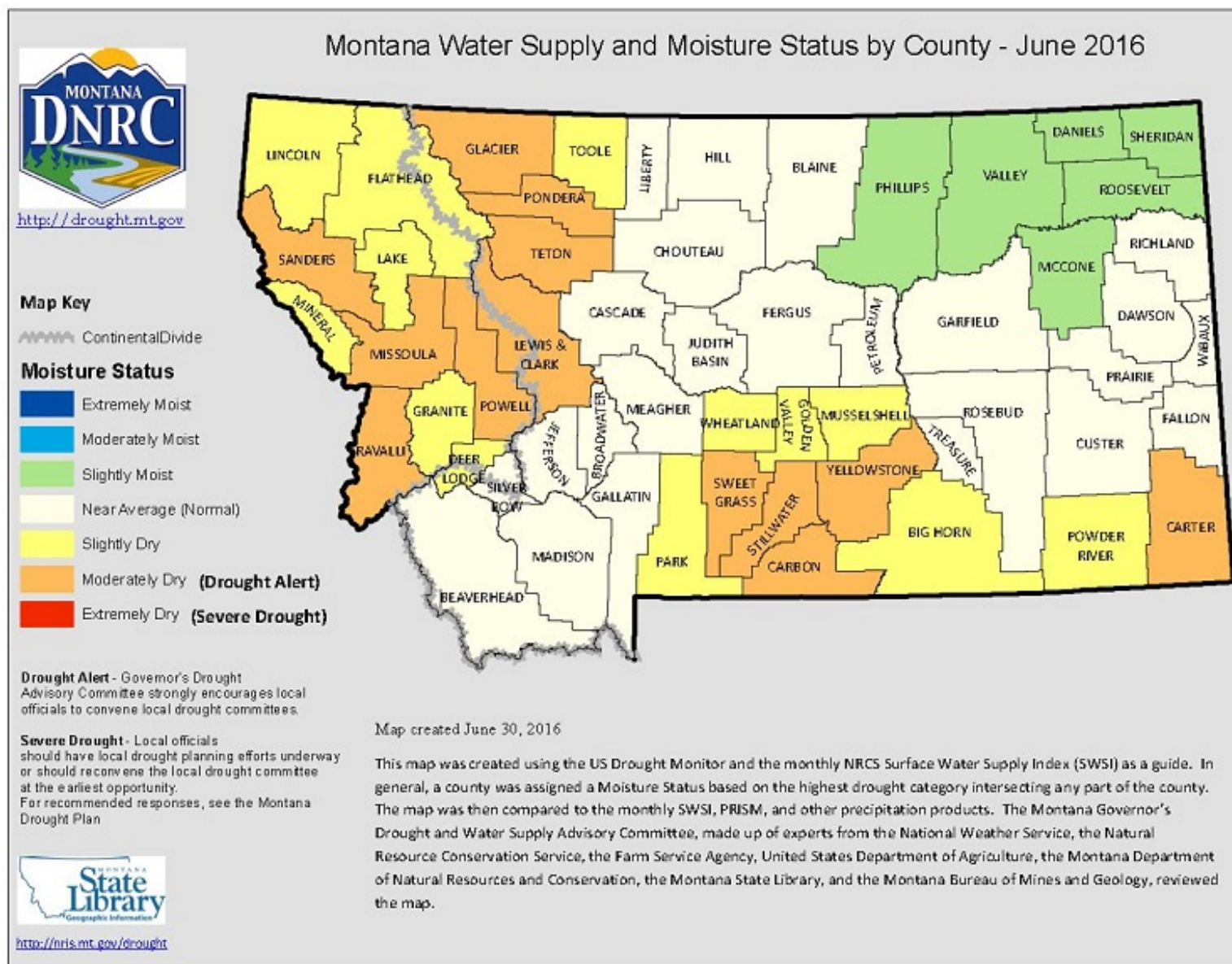


JUNE 2016

Montana Data Collection Office
Surface Water Supply Index (SWSI)
June 1, 2016

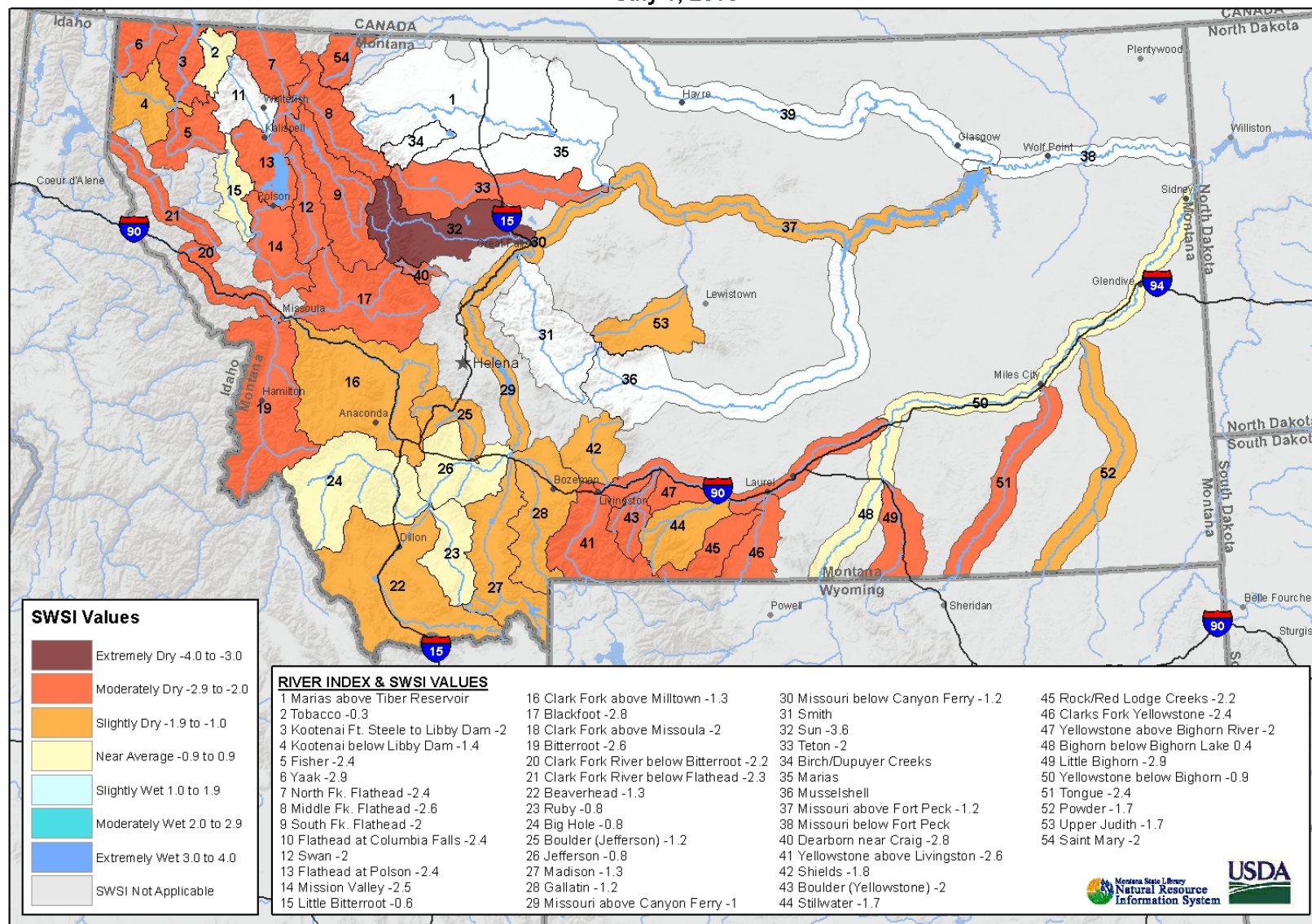


JUNE 2016



JULY 2016

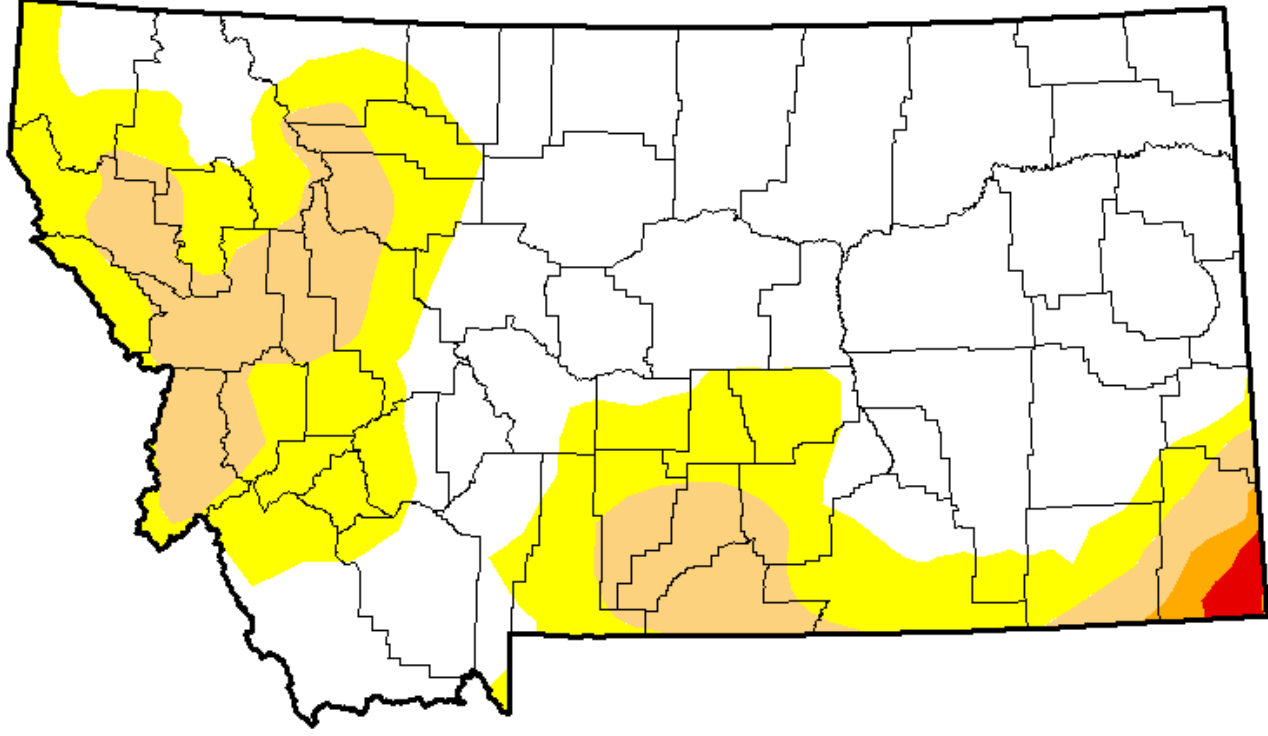
Montana Data Collection Office
Surface Water Supply Index (SWSI)
July 1, 2016



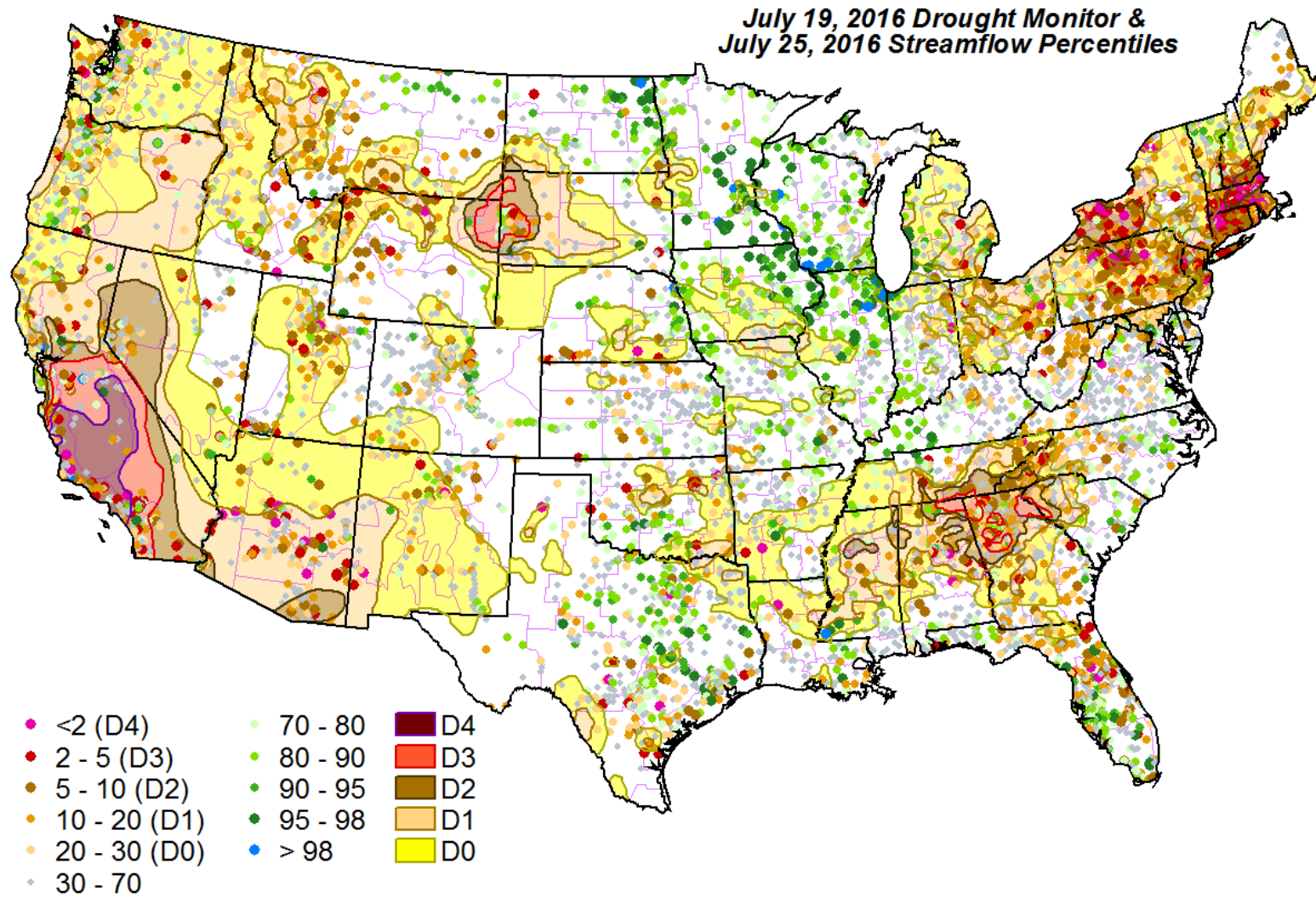
Note: Data used to generate this map are PROVISIONAL and SUBJECT TO CHANGE



ANTICIPATED IMPACTS



ANTICIPATED IMPACTS



MITIGATION ACTIVITY

- The Lt. Governor declared a “Drought Alert” in 9 counties, urging county commissioners to work with FSA CEDs to document any crop loss, and to coordinate with DES on any necessary emergency preparedness.
- Newsletters to each planning basin were created to provide more locally oriented water supply information (drought.mt.gov).
- Montana will host 4 Community Drought Forums in August and September to kick off its Drought Response Plan update process.



MITIGATION ACTIVITY

- The NDRP program continues to move forward in the Upper Missouri thanks to additional funding from the BOR. This process will be critical to the update of the state's response plan by hopefully providing a “template” for building local drought resiliency.

Montana

Montana Department of Natural Resources and Conservation, Building Drought Resilience in the Missouri River Headwaters in Montana

Reclamation Funding: \$200,000

Total Project Cost: \$400,000

The Montana Department of Natural Resources and Conservation will develop nine watershed drought resilience plans for each tributary of the Missouri River headwaters basin in southwestern Montana. The core elements and data of each individual watershed plan will then be incorporated into a regional Headwaters Basin Drought Resilience Plan that considers downstream effects and evaluates impacts at the regional scale. The Missouri headwaters basin covers 14,700 square miles and is at risk from frequent drought and the changes in the timing of run-off, which will occur earlier in the year as a result of climate change. The State of Montana will partner with the National Drought Resilience Partnership, a consortium of federal agencies working to build long-term drought resilience, as well as state and local stakeholders to conduct these planning efforts.

