

Pacific Northwest Climate and Drought Update, December 2017

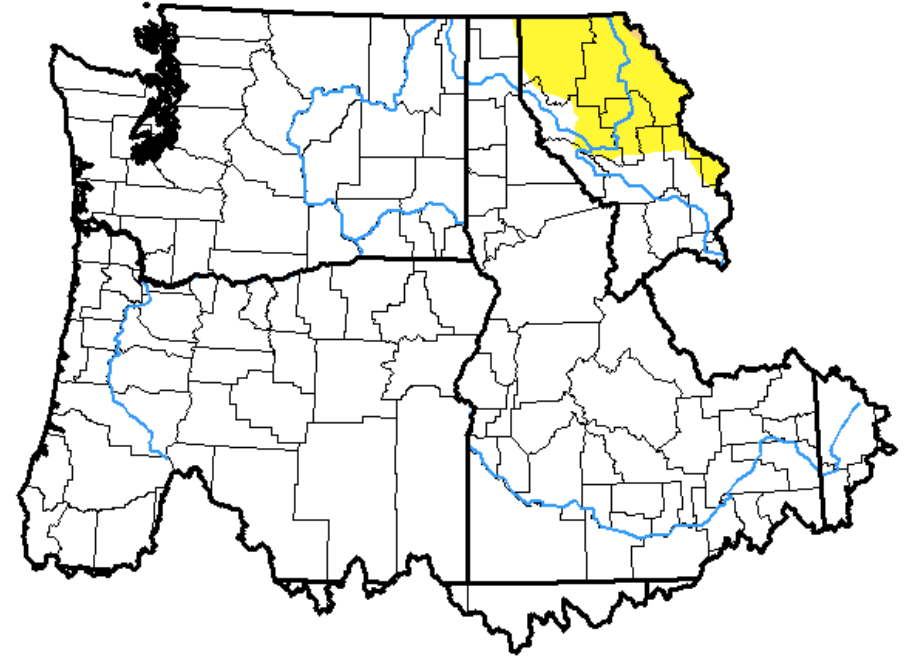
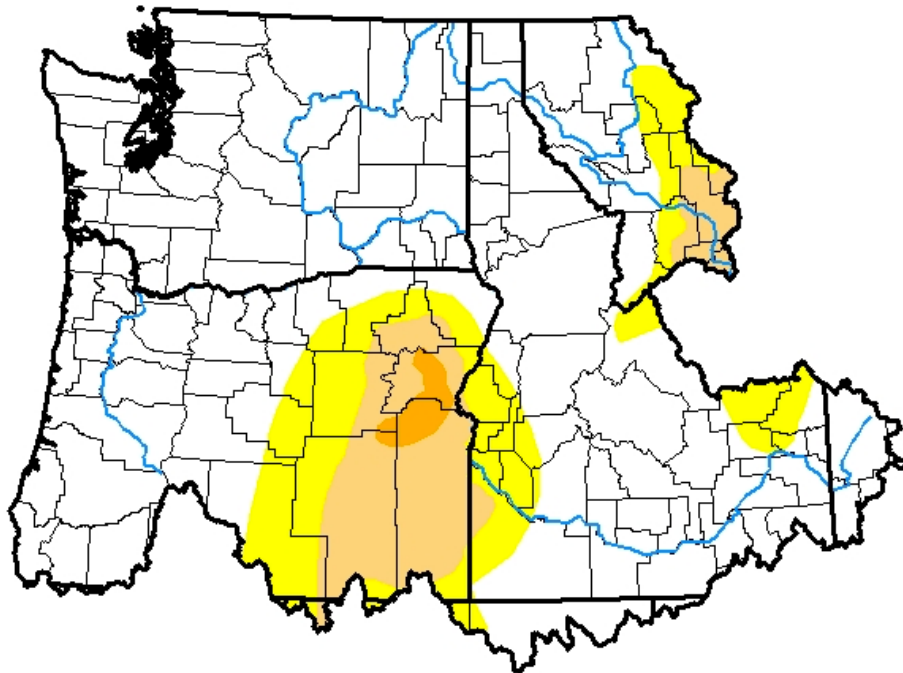
John Abatzoglou
@climate_guy

University
of Idaho



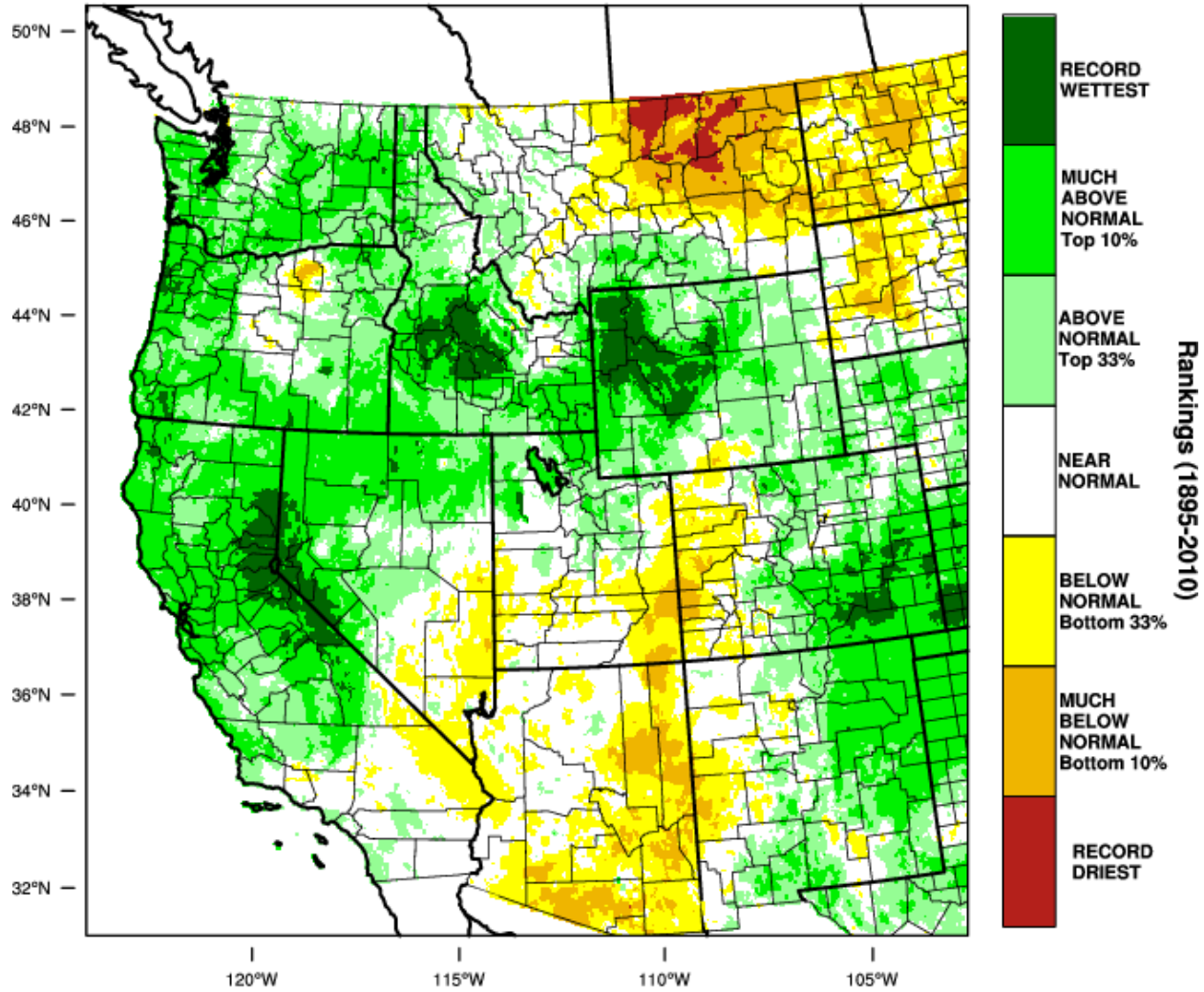
December 20, 2016

December 12, 2017



<https://www.drought.gov/drought/dews/pacific-northwest>

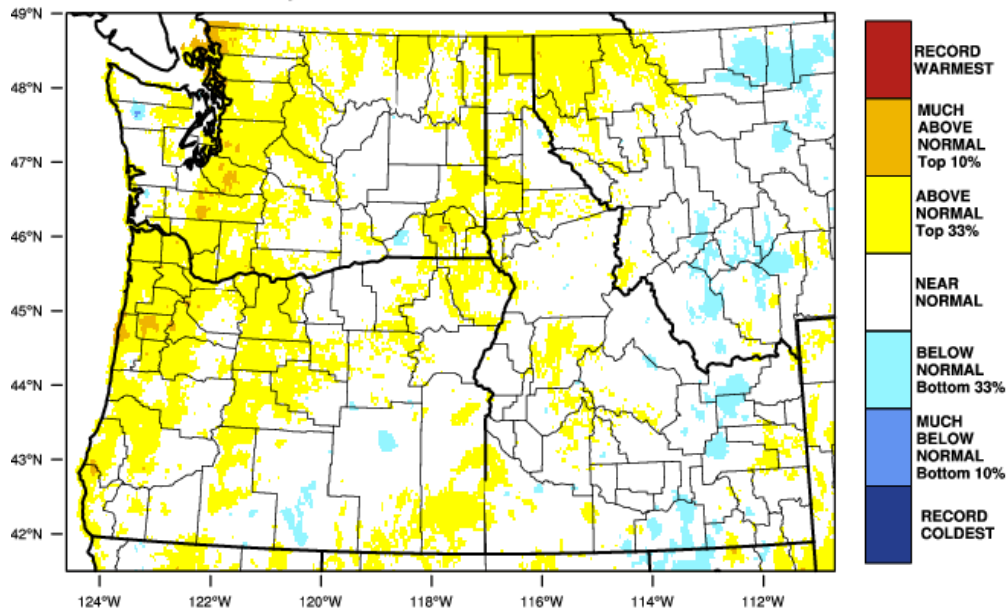
Western United States - Precipitation January-November 2017 Percentile



WestWide Drought Tracker, U Idaho/WRCC Data Source: PRISM (Prelim), created 16 DEC 2017

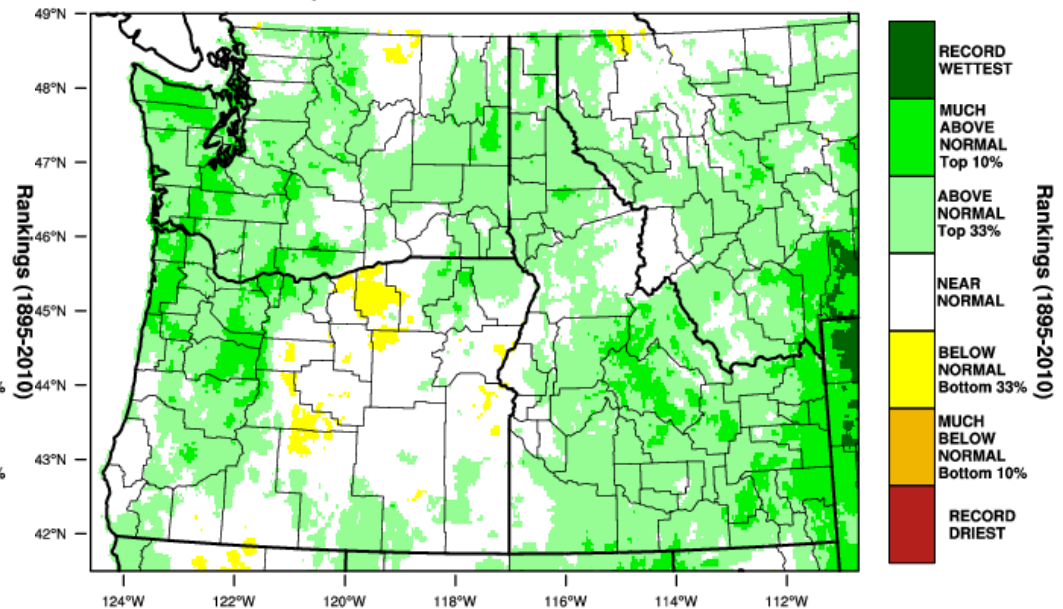
Northwestern US Fall (Sep-Nov) 2017

Pacific Northwest - Mean Temperature
September-November 2017 Percentile



WestWide Drought Tracker - U Idaho/WRCC Data Source - PRISM (Prelim), created 11 DEC 2017

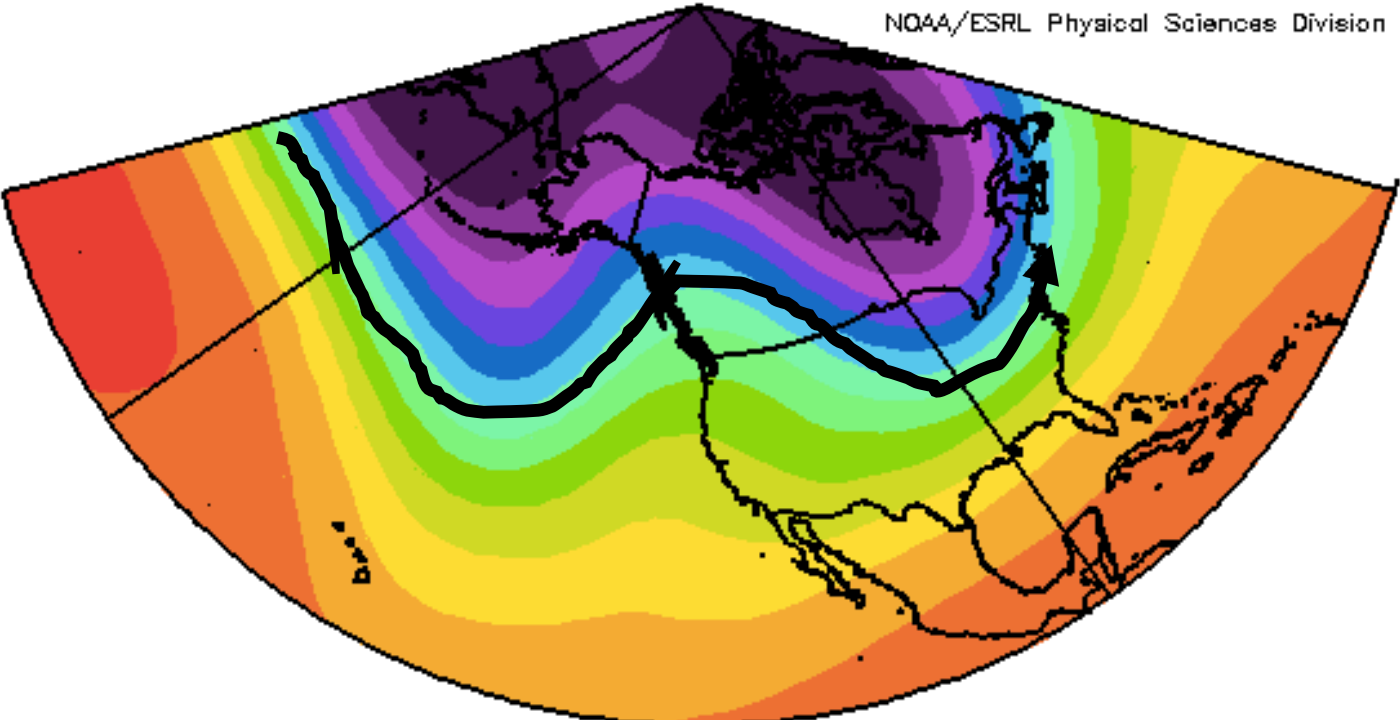
Pacific Northwest - Precipitation
September-November 2017 Percentile



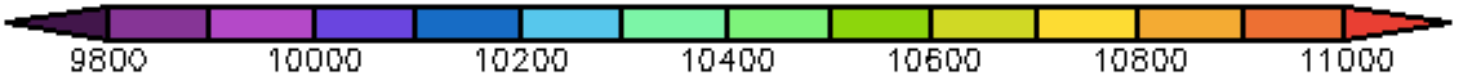
WestWide Drought Tracker - U Idaho/WRCC Data Source - PRISM (Prelim), created 11 DEC 2017

<http://www.wrcc.dri.edu/wwdt/>

NOAA/ESRL Physical Sciences Division

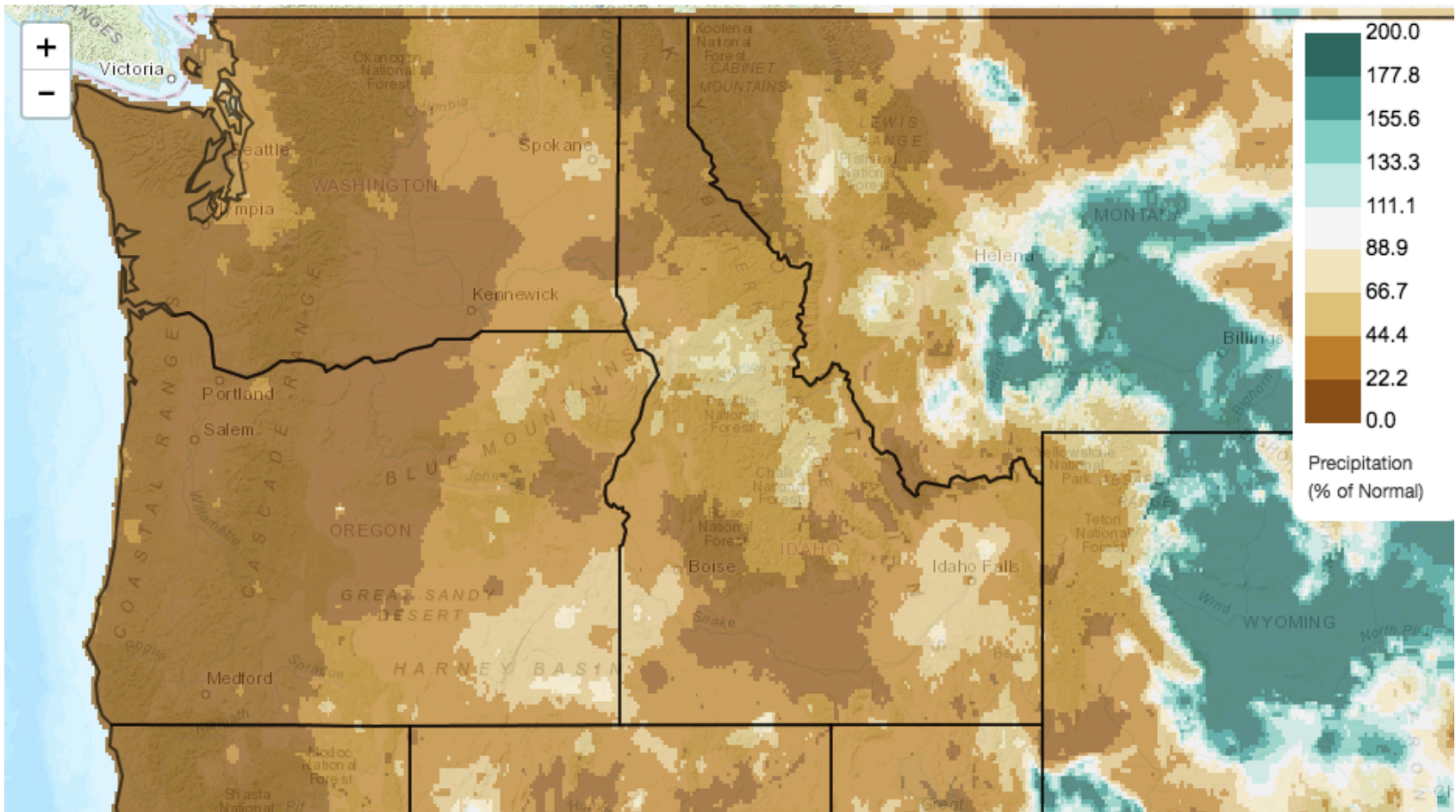


250mb Geopotential Height (m) Composite Mean
12/1/17 to 12/15/17
NCEP/NCAR Reanalysis



Last 15 Days Precipitation Anomaly (% of 1981-2010 Normal)

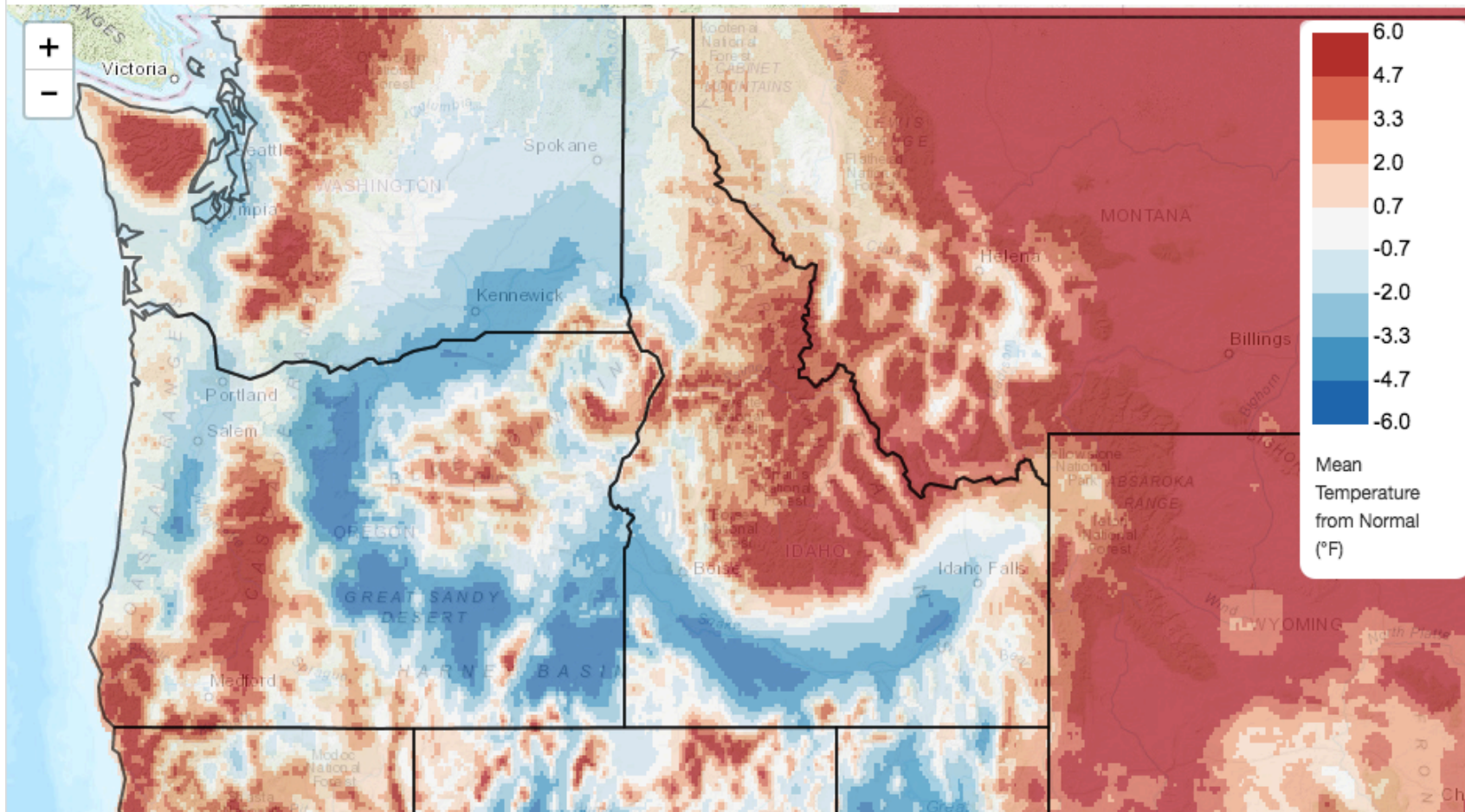
2017/12/02 - 2017/12/16



<http://climatetoolbox.org>

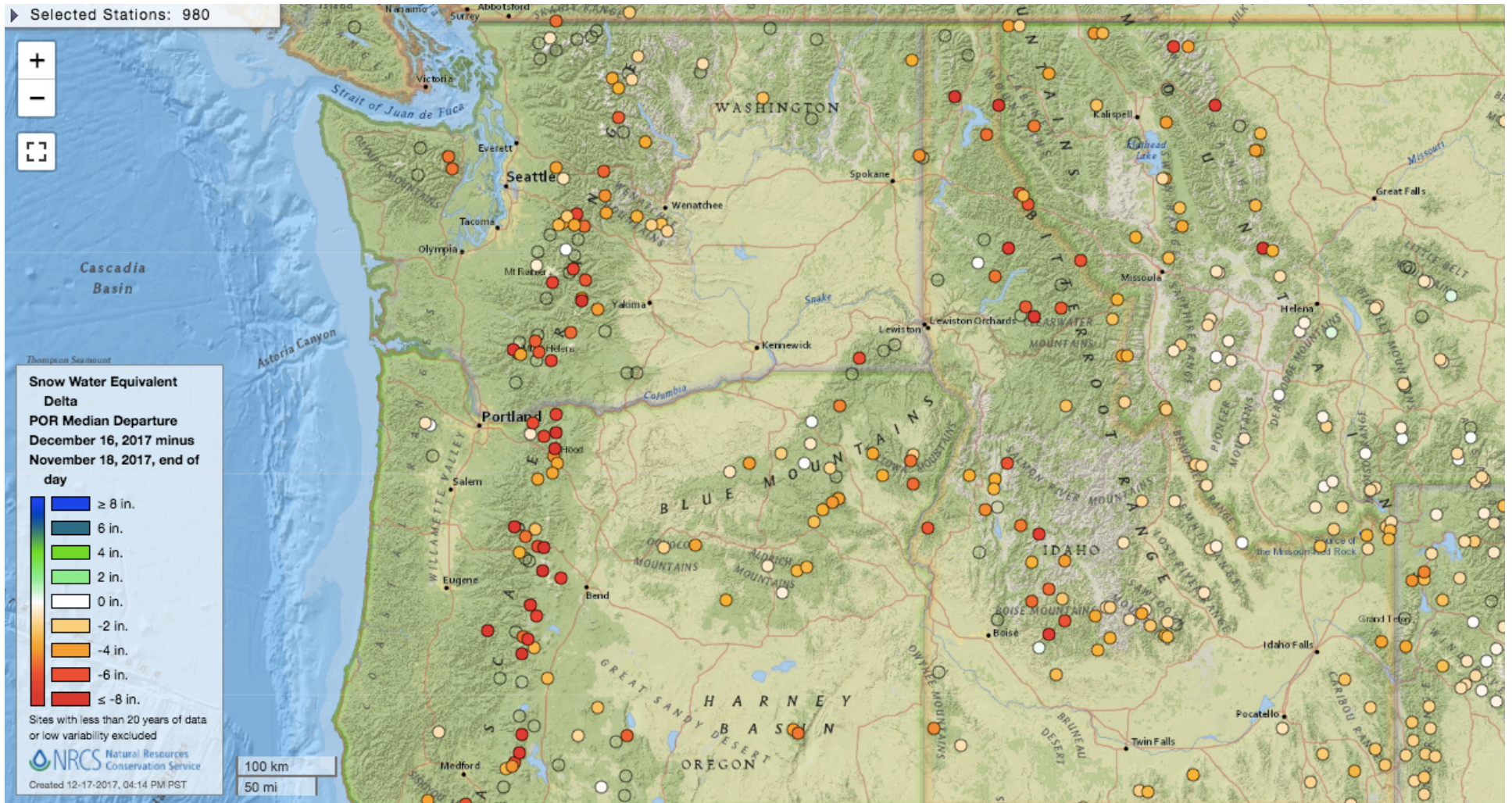
Last 15 Days Mean Temperature Anomaly (°F from 1981-2010 Normal)

2017/12/02 - 2017/12/16



<http://climatetoolbox.org>

SWE Anomaly over past 4 weeks

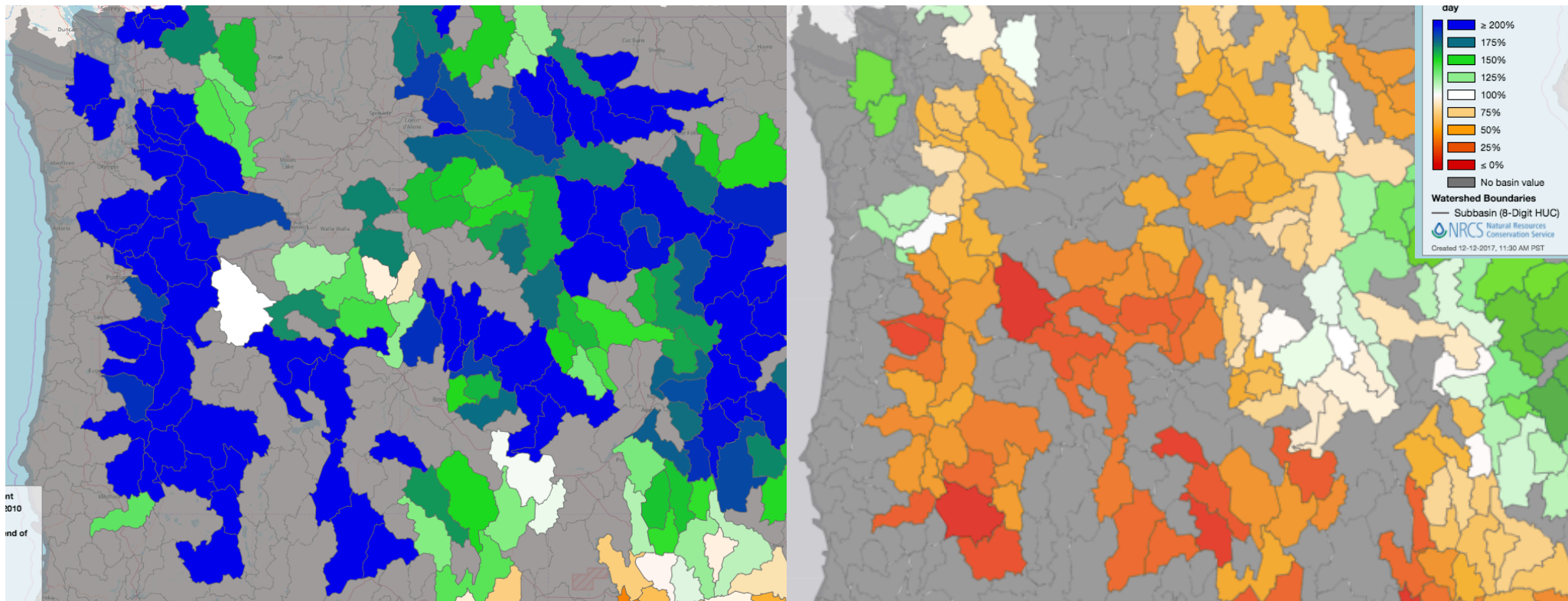


The Winter 2017-18 Snowpack Rollercoaster

Snow water equivalent % of Median

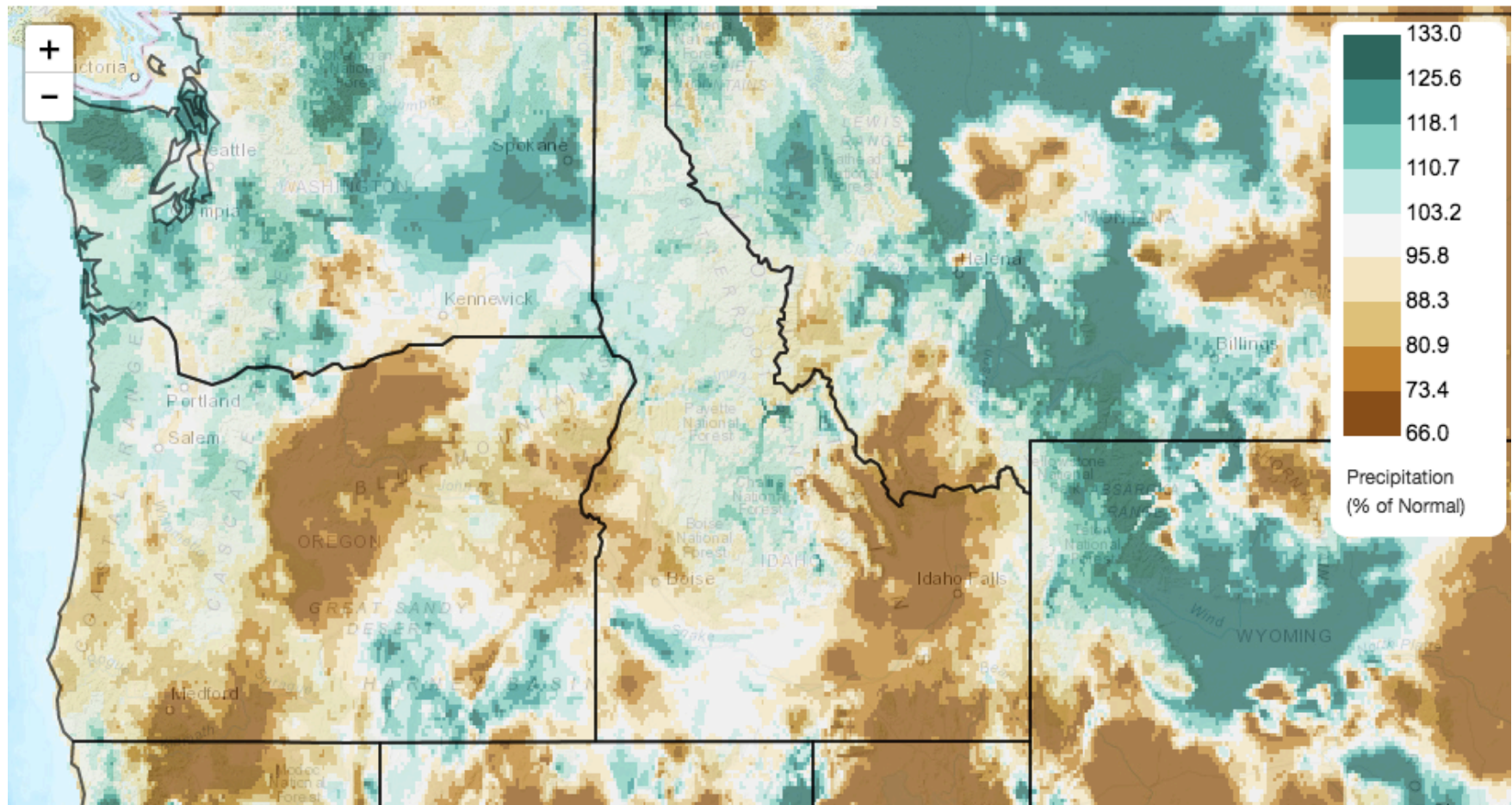
Nov 20, 2017

Dec 16, 2017



Current Water Year Precipitation Anomaly (% of 1981-2010 Normal)

2017/10/01 - 2017/12/16



Summary

- Great start to the water year tempered by stubborn ridge over 1st half of December
- Subpar snowpack to date
 - Oregon hurting most
 - Normal to above normal in Upper Snake watersheds
- Waiting on La Nina?

University
of Idaho

<http://climatetoolbox.org>

